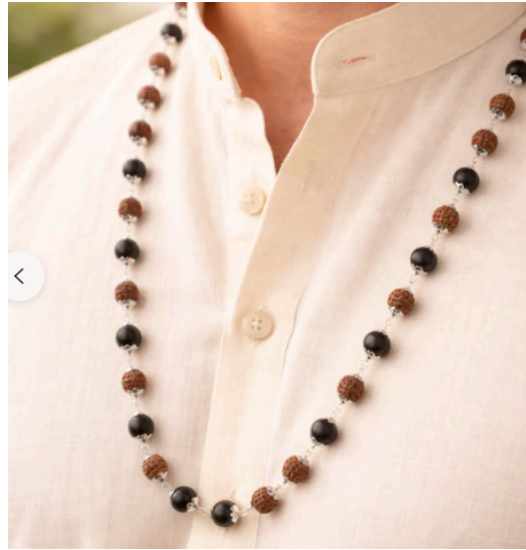


Karungali Malai Bracelet: Meaning, Benefits, and Cultural Significance

The [Karungali Malai bracelet](#) has gained increasing attention among those interested in spirituality, wellness, and traditional practices. Rooted in ancient beliefs and cultural heritage, this bracelet is more than just an accessory—it is often regarded as a powerful symbol of protection, energy balance, and inner strength. In this article, we will explore what a Karungali Malai bracelet is, its origins, benefits, and why it continues to attract people across the world.



What is a Karungali Malai Bracelet?

The Karungali Malai bracelet is made from the wood of the Karungali tree, also known as ebony wood in some traditions. The word “Karungali” originates from South India, particularly Tamil culture, where it has long been associated with spiritual practices and healing traditions. The term “Malai” means garland or chain, and in this context, it refers to a series of beads strung together to form a bracelet.

These bracelets are typically crafted using small, polished wooden beads that are dark in color—often deep brown or black. The natural texture and earthy appearance of the beads make the bracelet visually appealing while also retaining a strong connection to nature.

Historical and Cultural Background

The use of Karungali wood dates back centuries. In traditional Indian systems of belief, particularly those influenced by Siddha and Ayurvedic practices, certain woods and natural materials are believed to carry specific energies. Karungali wood, in particular, is thought to have protective and stabilizing properties.

In Tamil culture, Karungali items such as malas (necklaces), bracelets, and even small idols are used during meditation, prayer, and spiritual rituals. It is often believed that the wood absorbs negative energies and helps maintain a positive aura around the wearer.

Spiritual Significance

One of the main reasons people wear a Karungali Malai bracelet is its perceived spiritual benefits. Many believe that the bracelet acts as a shield against negative energies, evil eye, and harmful vibrations. It is often recommended for individuals who feel emotionally drained, stressed, or spiritually imbalanced.

The bracelet is also associated with grounding energy. In spiritual practices, grounding refers to the ability to stay connected to the present moment and maintain emotional stability. Wearing Karungali beads is thought to help calm the mind, reduce anxiety, and promote a sense of inner peace.

Additionally, some practitioners believe that Karungali wood resonates with certain energy centers in the body, helping to balance them and improve overall well-being.

Health and Wellness Benefits

While there is no scientific evidence to support all the traditional claims, many users report various health and wellness benefits from wearing a Karungali Malai bracelet. These include:

1. Stress Reduction:

The natural material and calming appearance of the bracelet may contribute to a soothing psychological effect. Many people find comfort in wearing something that symbolizes protection and stability.

2. Improved Focus and Clarity:

Some users believe that the bracelet helps in improving concentration and mental clarity, making it useful for students and professionals.

3. Emotional Balance:

Karungali wood is thought to help stabilize emotions and reduce mood swings, promoting a more balanced state of mind.

4. Protection from Negative Influences:

A widely held belief is that the bracelet protects the wearer from negative energies, including jealousy and ill intentions from others.

Aesthetic and Fashion Appeal

Beyond its spiritual and cultural importance, the Karungali Malai bracelet has also become a popular fashion accessory. Its minimalist design makes it suitable for both men and women, and it can be worn with traditional as well as modern outfits.

The dark wooden beads provide a natural, earthy look that complements a variety of styles. Many people appreciate the bracelet not only for its meaning but also for its versatility and elegance.

How to Wear and Care for the Bracelet

Wearing a Karungali Malai bracelet is simple, but there are a few traditional guidelines that some people follow:

- **Which Hand to Wear:** Some believe it should be worn on the right hand for men and the left hand for women, although this is not a strict rule.
- **During Daily Activities:** It can be worn throughout the day, but some prefer to remove it while bathing or sleeping to maintain its longevity.
- **Spiritual Practices:** Many people wear it during meditation or prayer to enhance their focus and connection.

Care Tips:

- Avoid exposing the bracelet to excessive water or harsh chemicals.
- Clean it gently with a dry cloth.
- Store it in a safe place when not in use.

Proper care ensures that the bracelet retains its appearance and durability over time.

Who Should Wear a Karungali Malai Bracelet?

The bracelet is suitable for anyone interested in spiritual growth, emotional balance, or simply a meaningful accessory. It is often recommended for:

- Individuals experiencing stress or anxiety

- People seeking protection from negative energy
- Those interested in meditation or mindfulness
- Anyone who appreciates natural and symbolic jewelry

However, it is important to remember that the bracelet is not a substitute for medical or psychological treatment. It should be viewed as a complementary practice rather than a cure.

Modern Popularity and Global Reach

In recent years, the Karungali Malai bracelet has gained popularity beyond South India. With the rise of interest in holistic wellness and spiritual accessories, people from different cultures are exploring traditional items like this bracelet.

Online platforms and global marketplaces have made it easier for individuals to access authentic Karungali products. As a result, the bracelet has become part of a broader trend that blends spirituality with everyday lifestyle choices.

Things to Consider Before Buying

If you are planning to purchase a Karungali Malai bracelet, here are a few tips to keep in mind:

- **Authenticity:** Ensure that the bracelet is made from genuine Karungali wood.
- **Quality of Craftsmanship:** Look for smooth, well-polished beads and durable threading.
- **Source:** Buy from reputable sellers to avoid counterfeit products.
- **Comfort:** Choose a size that fits comfortably on your wrist.

Being mindful of these factors will help you select a bracelet that is both meaningful and long-lasting.

Conclusion

The Karungali Malai bracelet is a unique blend of tradition, spirituality, and style. Whether you are drawn to its cultural roots, its symbolic meaning, or its aesthetic appeal, the bracelet offers something valuable for everyone.

While its benefits may vary from person to person, its enduring popularity suggests that it holds a special place in the lives of many. As both a spiritual tool and a fashion accessory, the Karungali Malai bracelet continues to connect people with ancient traditions while fitting seamlessly into modern lifestyles.